



CAPA e Newsletter



CHINESE AMERICAN PATHOLOGISTS ASSOCIATION

~ 全美华人病理学会 ~

VOLUME 3 ISSUE 1 2017

In this issue:

The President's Message	P1
The CAPA Annual Report 2016-2017	P2-P11
Third China-US Pathology Symposium	P11-P12
CAPA 2017 Officers for Subcommittees	P13-P14
CAPA Activities for 2017-2018	P14
Recent Achievements from CAPA Members	P14-P15
Case of Quarter (COQ)	P16
Recipes of Quarter (ROQ)	P17
Acknowledgements and Advertisements for CAPA Sponsors	P17-P18

Editing Team:

Huan-You Wang
Fan Chen
Yanxia Li
Guilan Chen
Hui Guan

Designer and Editor-in-Chief:
Fan Chen



The President's Message

Dear CAPA Members:
It is my great honor and privilege to serve you, as the CAPA president for 2017-2018. Since its establishment in 2003, and with continuous and collective efforts from our past presidents, officers of all subcommittees, and all active members, CAPA has become a national and internationally recognized pathologist organization with about 750 members today.

CAPA consists of a very broad membership in both academic and private practice; in both Anatomic Pathology and Clinical Pathology; with both "experienced" and "young" pathologists. As a group, we are extremely accomplished, with many nationally and internationally known pathologists and tenured professors in major medical centers. We have members serve as Department Chairs and Directors for anatomic pathology in top US/Canadian universities, directors for residency and fellowship programs across the country, and directors/business owners in various settings of private practices.

The #1 mission of CAPA is to serve our members. As we move forward, I will work with the past president Dr. Wang, the president-elect Dr. Gong, current and newly elected officers, EC members, all subcommittees, and all members towards the following goals and CAPA events for 2017-2018:

Education

- 1) The 3rd CAPA diagnostic Pathology Course (Chicago, August 19-20, 2017)
- 2) The third CAPA-Beijing Pathology Symposium (Beijing, September 2-3, 2017)
- 3) The second CAPA Companion Meeting at 2017 CAP (National Harbor, October 7-11, 2017)
- 4) The first CAPA Pathology Symposium in

China (Dali, October 21-22, 2017);

5) The CAPA companion meeting at Chinese Pathology Society Meeting (Suzhou, October 26-29, 2017).

6) The CAPA Annual Meeting at 2018 USCAP (Vancouver, March 2018)

7) The online educational courses in US (Officially launched March 2017).

Publication

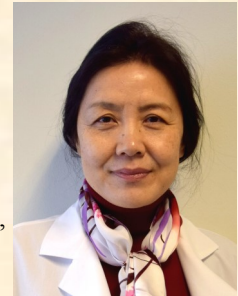
- 1) To improve our website and create a member-only domain
- 2) To continue our quarterly newsletters with news from all of our members

Other Missions

- 1) To re-organize CAPA subcommittees with special mentoring subcommittee for our junior members and chapters for each subspecialty.
- 2) To work with national and international pathology societies, including subspecialty pathology societies, and promote bigger roles of our members in these societies.
- 3) To continue grow with new members and more sponsorships.

Together, anything is possible. Let's get to work.

Ping Tang, MD, PhD
CAPA President 2017-2018
Professor and Director of Breast Pathology
University of Rochester Medical Center
Rochester, NY



The CAPA Annual Report 2016-2017

Dear CAPA Members and friends:

It was my great honor to have served as the Chinese American Pathologists Association (CAPA) President 2016-2017. Thanks to the outstanding team work of the CAPA executive committee, subcommittees, and strong support, dedication and contributions from our members, CAPA had a very successful year. Together as a team, we had achieved many new milestones in the past year. I want to congratulate and to express my sincerest thanks to all CAPA members, especially those of you who have been actively involved in and contributed to this great pathology community! The following is a brief summary of CAPA 2016-2017.

CAPA MEMBERSHIP, ORGANIZATION AND FINANCE

1. Membership: The key to the success of CAPA is largely relied on the growth CAPA members. The membership committee, led by Dr. Lizhen Gui, has done an outstanding job in recruiting new members and lifetime members. Our membership continued to grow at a historic record pace. During the past year, 215 new members and 61 new lifetime members were recruited. Our membership have reached a new record of 725, 42% increase from last year, active members increased to 410, 72% increase from last year, and Life time member increased to 130, 88% increase from last year (see table below). To improve the communication between the leadership group and CAPA community and to make sure the timely delivery of the important information to our members, we improved CAPA membership database and validated the members' email address. Congratulations to Dr. Lizhen Gui and the membership team for the outstanding work and great achievements!

	2015	2016	Percentage of increase
Total number	510	725	42%
Lifetime member	69	130	88%
Total active member	238	410	72%

2. Finance: The 2016 marked another financially successful year for CAPA. With the record increase in

Revenue, Cost and Net gain	2016
Income from members (membership due, registration, donation)	\$40500
Income from sponsorship	\$44000
Total expenses (meeting costs, awards, and others)	\$40840
Net gain	\$43660

CAPA membership, the generous supports from many CAPA sponsors, and well-balanced spending control, we had the largest net gain of \$43,660 in CAPA history. CAPA is more financially sound than ever before. The following table lists the most important numbers reflecting its financial performance in 2016-2017.

3. Revision of the CAPA Bylaws: We revised the CAPA bylaws in 2016. The newly revised CAPA bylaws allow all pathologists who cherish Chinese culture, pathology residents and fellows to become regular CAPA members if they are willing to pay the annual membership fee. This change allows our pathology trainees to be actively involved in CAPA activities and CAPA elections. In the meantime, we continue to offer free associate membership to our residents and fellows. Unlike the regular CAPA member, the associate members do not have the right to vote in CAPA election. The revised CAPA bylaws also provided the qualification criteria for the candidates who are running for CAPA offices and the eligibility criteria for the qualified voter. In addition, the revised CAPA bylaws also set the clear guideline and the timely for CAPA elections. Therefore the revised CAPA bylaws are not only more inclusive to the new members, but will also improve the CAPA operation and elections.

4. Historic 2017 CAPA Election: To ensure that the 2017 CAPA election is open and fair, we have implemented several new procedures for this election, including an open call for qualified candidates, the creation of a list of qualified voters, and an official voting procedure, etc. We also used the SurveyMonkey voting system, which utilized each voter's email address and its associated name as unique identifiers for every voter. This system not only avoided the possibility of duplicate votes, but also automatically generated the election results. To make sure that each qualified voter could receive his/her voting link by email, we performed a test voting among all qualified voters before the official election started. Two hundred ninety (78.4%) voter participated in the test voting. All these preparation works led to a great success of 2017 CAPA election and laid the foundation for future CAPA elections. The election results of this year were released in less than three hours after the poll was officially closed.

We are very fortunate to have an elite group of outstanding candidates for the 2017 CAPA election. The voter participation was outstanding with a voting rate of 84% in this election. Our members celebrated the election of president-elect, four new executive committee members and new CAPA treasurer with joy. Congratulations to Dr. Yun Gong for being elected as CAPA President-elect, 2018-2019; Drs. Lirong Chen, Yong "Andy" Ke, Wei Xin, and Linsheng Zhang for being elected as the EC members, 2017-2019; and Dr. Huihong Xu for being elected by CAPA EC as the CAPA treasurer, 2018-2021.

(Cont'd on Page 3)

The CAPA Annual Report 2016-2017 (Cont'd)

(Cont'd from Page 2)

Special thanks to Drs. Charles Chuanhai Guo, Feng Li, Dongfeng Tan, Jack Yang for their participation in this election and for their willingness to serve and to contribute to CAPA community. I would like to thank all members of the CAPA Election Committee (Drs. Huamin Wang, Ping Tang, Fan Lin, Jiaoti Huang and Youli Zu) and Executive Committee (Drs. Huamin Wang, Ping Tang, Fan Lin, Marilyn Bui, Guoping Cai, Zongming (Eric) Chen, Lizhen Gui, Chen Liu, Huan-You Wang, Jun Zhang and Lanjing Zhang) for doing everything possible to make sure an open and fair 2017 election. I would also like to express my special thanks to Drs. Lizhen Gui and Dr. Jie Song (the IT expert) who had done an outstanding job and had contributed numerous hours to this election! Thank you all for your strong support!

5. Establishment of Three New CAPA Subspecialty Subcommittees: To better serve our members with the diverse specialty interests and needs, CAPA has established three new subspecialty subcommittees in the past year, including hematopathology, cytopathology and dermatopathology subspecialty subcommittees. These functional subspecialty committees not only bridged and coordinated the activities in hematopathology, cytopathology and dermatopathology interest groups with CAPA, but also helped CAPA to recruit new members.

6. Creation of New CAPA Award, CAPA President's Award: This new CAPA award, CAPA President's award, created by CAPA EC to recognize the distinguished international pathologists for their contributions to CAPA, such as promoting CAPA initiatives at the international level, organizing CAPA joint international conferences with an international, national, or local pathology societies etc. The criteria proposed by EC includes:

- a. The candidate(s) have been actively engaged in the activities to promote CAPA and have made major contribution(s) to CAPA.
- b. The candidate shall be a leader or a major player in his/her national pathology societies and/or international pathology societies.
- c. The candidate shall be a nationally and/or internationally well-recognized expert pathologist.

7. Establishment of the New CAPA Website and publication of eNewsletters

To better serve the increasing needs of the CAPA community, we have created a new CAPA website <http://www.capa-ht.org>. The new website provides a brand new look of CAPA and is fully functional now. In the meantime, we continued to update the old CAPA website (<http://www.capaht.org>). Both websites have been updated with news and announcements in a timely manner. We would like to acknowledge Dr. Jie Song's talent and contributions to the establishment of the new website and maintaining the old website.

We continued to publish the CAPA eNewsletters, which has been well accepted and very effectively keep all members updated with CAPA news, upcoming events and activities, achievements from its members, networks with other pathology societies, and acknowledgements of contributors and sponsors. Very special thanks to Dr. Fan Chen for her passion, talent, dedication and tireless effort to keep the CAPA eNewsletters.



Group photo from the CAPA Annual Dinner in Seattle

EDUCATIONAL ACTIVITIES

Educational initiatives have been one of the major focuses of CAPA 2016-2017. The educational activities organized by CAPA provide unique opportunities for CAPA members to learn, to communicate, to collaborate and to promote CAPA at national and international levels. During the past year, CAPA had successfully organized or co-organized several national and international meetings/ courses. The educational activities are briefly summarized as below.

1. The First CAPA Companion Meeting: "Frontiers of Diagnostic Pathology, New Entities, Classifications & Markers" and Career Development Forum for Trainees at 2016 CAP Annual Meeting

The first companion meeting was successfully held on Saturday, 5:30 – 7:30 pm, September 24, 2016 in Encore, Las Vegas, Nevada. The conference was approved by the CAPA EC and organized by Drs. Lanjing Zhang, Fan Lin, Huamin Wang, Eric Chen, Ping Tang, and Lizhen Gui. 133 pathologists, fellows, and residents from different states registered and attended this exciting and successful event! This was new milestone for CAPA. Very special thanks to the members of the organizing committee, speakers and all of you for your strong support!

This two-hour course included five timely hot topic lectures Listed below

- a. New biomarkers and entities in breast pathology. Dr. Ping Tang, University of Rochester
- b. Practical approaches to diagnostic pitfalls of soft tissue tumors. Dr. Marilyn Bui, Moffitt Cancer Center

(Cont'd on Page 4)

The CAPA Annual Report 2016-2017 (Cont'd)

(Cont'd from Page 3)

- c. New grading system of prostate cancer and new terminologies in genitourinary pathology. Dr. Ximing Yang, Northwestern University
- d. Emerging concepts and new diagnostic criteria in gynecologic pathology. Dr. Pei Hui, Yale University
- e. New entities and classifications of gastrointestinal pathology. Dr. Hanlin Wang, UCLA

This activity has been planned and implemented in accordance with the Essential Areas and Policies of the Accreditation Council for Continuing Medical Education (ACCME) through the Joint Providership of the CAP and CAPA. The CAP is accredited by the ACCME to provide a maximum of two (2) AMA PRA Category 1 Credit(s)TM to physicians who attended the meeting.

After the Companion Meeting, CAPA hosted a Career Development Forum for Trainees at CAP 2016 Annual Meeting in the same room from 7:45 pm to 9:15 pm. The career development forum was hosted by Drs. Lanjing Zhang, Chin-Lee Wu, Fan Lin with two outstanding academic pathologists Drs. Hui Pei and Ximing Yang and two pathologists from private practice Drs. Eric Glassy and Sang Wu as the panelists. The forum provided excellent “inside” advises and suggestions on career development, fellowship applications, research and job seeking for the CAPA residents and fellows from well-established pathologists.



Meeting organizers, speakers and panelist from left to right: Drs. Lanjing Zhang, Patrick Godbey, Pei Hui, Jim Zhai, Hanlin Wang, Huamin Wang, Ping Tang, Fan Lin, Chin-Lee Wu, Ximing Yang, San Wu and Eric Glassy

2. The Second CAPA Diagnostic Pathology Course

The Second CAPA Diagnostic Pathology Course, “Pitfalls and Pearls in Diagnostic Pathology” was successfully held from November 12-13, 2016 at the University of Texas MD Anderson Cancer Center, Houston, Texas. The conference was approved by the CAPA EC and organized by Drs. Huamin Wang, Fan Lin, Ping Tang, Lanjing Zhang, Zongming Chen, Lizhen Gui, Yun Gong, Steven

Shen, Youli Zu, He Wang, Ming Guo, Bihong Zhao. Over 150 practicing Chinese and non-Chinese pathologists, fellows, and residents from different states attended this conference. Very special thanks to the faculty members, to the members of CAPA Houston-Galveston Chapter, and to all of you for the overwhelming support to make this conference a very successful event!

This two-day course included didactic lectures and case-based presentations of diagnostically challenging cases in the fields of surgical pathology, cytopathology, hematopathology and dermatopathology. It is intended primarily for practicing pathologists, fellows, and residents to recognize the pitfalls or mistakes that are commonly encountered in daily diagnostic pathology and intraoperative frozen section consultations in different organ systems, to learn and to apply the best practice approaches to avoid the commonly encountered diagnostic pitfalls or mistakes in daily practice and to improve in their diagnostic skills in problematic cases

Course Faculty

Name	Affiliations
Marilyn Bui, MD, PhD	Moffitt Cancer Center
Longwen Chen, MD, PhD	Mayo Clinic
Zongming Chen, MD, PhD	Geisinger Medical Center
Yun Gong, MD, PhD	University of Texas MD Anderson Cancer Center
Lizhen Gui, MD, PhD	Northwest Arkansas Pathology Associates
Charles Guo, MD, PhD	University of Texas MD Anderson Cancer Center
Jiaoti Huang, MD, PhD	Duke University
Fan Lin, MD, PhD	Geisinger Medical Center
Chen Liu, MD, PhD	Rutgers University NJMS &RWJMS
Jinsong Liu, MD, PhD	University of Texas MD Anderson Cancer Center
Lan Peng, MD	University of Texas Southwestern Medical Center
Suimin Qiu, MD, PhD	University of Texas Medical Branch Galveston
Steven Shen, MD, PhD	Houston Methodist Hospital/Cornell University

(Cont'd on Page 5)

The CAPA Annual Report 2016-2017 (Cont'd)

(Cont'd from Page 4)

Name	Affiliations	Name	Affiliations
Dongfeng Tan, MD, PhD	University of Texas MD Anderson Cancer Center	Lanjing Zhang, MD, MS	Princeton HealthCare System/Rutgers University
Ping Tang, MD, PhD	University of Rochester	Songlin, Zhang, MD, PhD	University of Texas Medical School Houston
Hanlin Wang, MD, PhD	University of California Los Angeles	Song Qing Zhao, MD,	Fort HealthCare Wisconsin
He Wang, MD, PhD	Temple University	Wenxin Zheng, MD	University of Texas South-
Huamin Wang, MD, PhD	University of Texas MD Anderson Cancer Center	Fang-Ming Deng,	New York University
Huan-You Wang, MD, PhD	University of California San Diego	Youli Zu, MD, PhD	Houston Methodist Hospi-
Sa Wang, MD	University of Texas MD Anderson Cancer Center	Ming Guo, MD, PhD	University of Texas MD
Yun Wu, MD, PhD	University of Texas MD Anderson Cancer Center	Bihong Zhao, MD, PhD	University of Texas Medi- cal School Houston
Shu-Yuan Xiao, MD	University of Chicago		
Ruliang Xu, MD, PhD	New York University		
Ximing Yang, MD, PhD	Northwestern University		
Ken He Young, MD	University of Texas MD Anderson Cancer Center		
Qihui (Jim) Zhai, MD, FCAP	Mayo Clinic		
Jing Zhang, MD, PhD	University of Washington &		

Accreditation: Special thanks to the Lewis Katz School of Medicine at Temple University. This activity has been planned and implemented in accordance with the accreditation requirements and policies of the Accreditation Council for Continuing Medical Education (ACCME) through the joint providership of the Lewis Katz School of Medicine at Temple University and the Chinese American Pathologists Association (CAPA).

(Cont'd on Page 6)



Group photo from the 2nd CAPA Diagnostic Pathology Course at MD Anderson Cancer Center

The CAPA Annual Report 2016-2017 (Cont'd)

(Cont'd from Page 5)

The Lewis Katz School of Medicine at Temple University is accredited by the ACCME to provide continuing medical education for physicians for a maximum of 13.5 *AMA PRA Category 1 Credit(s)*TM.

Very special thanks to CAPA Houston-Galveston Chapter, including many local faculty members, fellows and residents, Dr. Lizhen Gui, Dr. Fan Chen and all volunteers from outside of Houston-Galveston areas, who had volunteered to provide the conference with the best possible support; to Dr. Yun Gong and Dr. Xiaoping Sun for hosting the welcome party in their house for our faculties; and to our sponsors, including Advanced Cell Diagnostics, Inc., Fidelity, Foundation Medicine, NovoDix, Inc. and WebPathLab Inc. for their generous support of this conference

3. The Second CAPA-Beijing Pathology Symposium: Updates on Molecular and Neoplastic Pathology

The Second CAPA-Beijing Pathology Symposium was successfully held from September 3-4, 2016 in Beijing. The more than 400 attendees included numerous pathology departmental chairs and professors from well-known medical colleges and hospitals in China. The conference was organized by Dr. Ning Lu, professor and chair of the Pathology Department, National Cancer Institute and Hospital, Chinese Academy of Medical Sciences, and co-organized by Drs. Ximing Yang, Ping Tang and Huamin Wang of CAPA. The feedback and comments from the meeting organizers, speakers and, most importantly, the attendees, were extremely positive, and the meeting organizers have already started to organize the third conference in September 2017. Congratulations and thanks to all CAPA speakers for a job well done and for making CAPA more visible in China's pathology community! Nine lectures were presented by CAPA speakers as listed below.

4. The Third China-US Pathology Symposium

Topic	Speaker
Updates on the precursor lesions of pancreatic ductal adenocarcinoma	Huamin Wang
Recent Advances in Prostate Cancer Grading & The Roles of Pathologists in Genitourinary Cancer Target Therapy	Ximing Yang
Biomarkers that currently affect personalized medicine in lung cancer	Haodong Xu
The role of cytology in the era of molecular medicine.	Yun Gong
Tumor infiltrating lymphocytes and PD-L1 in breast cancer, an update in 2016	Ping Tang
Molecular testing in thyroid cancers: the current status and future direction	Guoping Cai
GI tumors as common primary sites of carcinoma of unknown primary: workup from IHC to molecular tests	Li Juan Wang
Update in salivary gland tumors	Qihui "Jim" Zhai
About Medical Practice in USA	Xiaoping Sun

The Third China-US Pathology Symposium was successfully held from 8:30 am-1:30 pm on March 4, 2017 in San Antonio. This meeting was jointly organized by the Chinese Society of Pathology (CSP) and CAPA and was sponsored by the Chinese Association of Medicine. Drs. Huamin Wang, Lanjing Zhang, Jinsong Liu, Ping Tang and Yun Gong served as the conference chair, executive chair, advisor and section chairs respectively from CAPA side. This meeting served as unique platform to promote the communications and collaborations between CAPA, CSP and the pathologists in China. This meeting included four hot topics and four case presentations from China, and four hot topics from CAPA. The CAPA speakers and their topics are listed below:

(Cont'd on Page 7)



The CAPA Annual Report 2016-2017 (Cont'd)

(Cont'd from Page 6)

- a. Testicular Neoplasms: Cases-Based Presentation and Review of Immunohistochemistry. Dr. Fan Lin (Geisinger Medical Center)
- b. IHC Working Algorithms for ENT Pathology: a Case-based Approach. Dr. Beverly Wang (UC Irvine)
- c. Managing an academic department of pathology: How do young faculty prepare for it? Dr. Jiaoti Huang (Duke University Medical Center)
- d. Molecular /Genomic Alterations in Lymphoma / Leukemia -Brief Review and Practice Applications. Dr. Huan-You Wang (UC San Diego)

5. Participation in the Chinese Society of Pathology (CSP) 2016 Annual Meeting in Hefei, Anhui Province

The 22nd Congress of the CSP was successfully held from November 24-27, 2016 in Hefei, Anhui Province. It was attended by over 1500 registered attendees. One factor contributing to the success of this meeting was the collaboration between CAPA and CSP by including a group of excellent CAPA speakers. The CAPA speaker team was led by Dr. Yun Gong and includes Dr. Shaoxiong Chen, Dr. Fang-Ming Deng, Dr. Jinsong Liu, Dr. Shuyuan Xiao and Dr. Wenxing Zheng. Each speaker gave one hot topic presentation and one case presentation in an interactive way from cytology, soft tissue, GU, GYN, and GI. Their presentations are very well received and resulted in active discussion.

6. Participation of the 10th Congress of Asia Pacific International Academy of Pathology (APIAP)

Dr. Huamin Wang, Dr. Jing Zhang and Dr. Jim Zhai had proposed to 10th Congress of APIAP Organizing Committee to host sections on the molecular pathology on solid tumors and head & neck pathology. These sections have been reviewed and approved by the 10th Congress of APIAP Organizing Committee. For the first time, CAPA has been officially listed in the meeting program of the 10th Congress of APIAP, another milestone for CAPA. CAPA will organize three sections at this important international meeting, which will be held in Bali, Indonesia, April 24-27, 2017.

7. CAPA sponsored the First Hematopathology Case Presentation Conference

CAPA sponsored the First Hematopathology Case Presentation Conference on March 14, 2016 in Seattle during the USCAP meeting. This conference was organized by Drs. Henry Dong, Jerald Gong, Zenggang Pan, Huan-You Wang, Linsheng Zhang, and Jiehao Zhou with ten interesting cases presented. There were approximately 60 pathologists, fellows and residents attended the conference and participated in the case discussions.

8. CAPA sponsored the online educational program and webinars

On November 19, 2016, CAPA sponsored the webinar "Next generation sequencing (NGS) based mutation profiling in the clinical evaluation of myeloid neoplasms" by Dr. Linsheng Zhang in Emory University. One hundred eighty-three (183) people attended the 3 hour long webinar. Subsequently, Dr. Linsheng Zhang and his team had hosted four additional webinars on prostate, adrenal gland, urinary bladder and neoplastic renal pathology with an average of over 190 attendees. Congratulations for the great success of these webinars.

9. Congratulations to Dr. Fan Lin, Lanjing Zhang and CAPA Team for Two Special Issues in the Archives of Pathology & Lab Medicine

Under leadership of Dr. Fan Lin and Dr. Lanjing Zhang, CAPA Team will published two special issues of 10 review articles to highlight the lectures presented at the first CAPA Diagnostic Pathology Course in New York. These review articles will be published in August and September 2017. Congratulations to Dr. Fan Lin, Lanjing Zhang and CAPA Team! Job well done!

10. CAPA was invited with CAP and ASCO etc. as one of the non-financial sponsors for the Cancer Biomarkers Conference II (CBCII) at the Houston Methodist Research Institute in September 2016.

SPECIAL THANKS TO THE SPONSORS FOR CAPA ACTIVITIES IN 2016-2017

CAPA has had a stronger and healthier financial year than ever, which enabled us to carry out the many successful activities reported above. Very special thanks to the following sponsors (in alphabetical order) for their very generous sponsorships and contributions to CAPA and CAPA activities! The new sponsors for 2016-2017 are highlighted in red.

Advanced Cell Diagnostics, Inc.

BioGenex

Fidelity

Foundation Medicine

Geisinger IHC Reference Lab

GoPath

Maixin

Motic

NovoDiag, Inc.

South East Pathology Association

WebPathLab Inc.

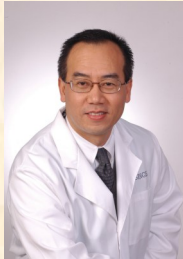
(Cont'd on Page 8)

The CAPA Annual Report 2016-2017 (Cont'd)

(Cont'd from Page 7)

CAPA AWARDS

CAPA Honorary Award: The CAPA Honorary Award was created in 2015 to recognize a person (CAPA member or non-member) who has made a significant contribution to CAPA. Dr. Fan Lin was unanimously selected by the CAPA award committee and EC members to receive the 2017 CAPA Honorary Award. Congratulation to Dr. Lin!



Dr. Fan Lin is the deputy editor-in-chief of the Archives of Pathology & Laboratory Medicine, Director of Anatomic Pathology at Geisinger Health System. He received his M.D. from Fujian Medical University and Ph.D. in Biological Sciences from the University of North Texas. He completed AP/CP residency training at the University of Chicago Hospital in 1999, followed by one year of Cytopathology fellowship training at MD Anderson Cancer Center. He has authored over 80 articles in peer-reviewed pathology journals, over 20 book chapters, and presented over 175 posters/platform presentations at pathology society meetings. He leads the Geisinger Anatomic Pathology group in making contribution to the field of immunohistochemistry, including publishing "Handbook of Practical Immunohistochemistry – Frequently Asked Question, 2nd edition" and its free companion IHC website (www.ihcfaq.com), and contributing 2 special issues on IHC updates to the Archives of Pathology and Laboratory Medicine in 2014 and 2015. Dr. Lin is a reviewer for many pathology journals. Dr. Lin has been a member of CAPA since the establishment and former president of CAPA (2015-2016). Under the leadership of Dr. Lin, CAPA achieved many major mile stones: organized the first CAPA Diagnostic Pathology Course in New York City; edited a special issue of review articles to highlight the lectures presented at the First CAPA Diagnostic Pathology Course in NYC in *Archives of Pathology and Laboratory Medicine*; co-organized the first CAPA-Beijing Diagnostic Pathology Course in Beijing; published the quarterly CAPA eNewsletters; initiated the first CAPA Companion Meeting at the 2016 CAP meeting; recruited many more members, including many lifetime members; attracted more sponsors to make CAPA more financially stable and healthier than ever; created two new CAPA awards - CAPA Honorary Award and CAPA Member of the Year Award etc. We thank Dr. Lin for his outstanding leadership, dedication and contributions to CAPA.

The CAPA President's Award: This award was created by CAPA EC this year to recognize the distinguished international pathologists for their contributions to CAPA. The CAPA award committee and EC members selected two well-known pathologists from China, Dr. Xiu-Wu Bian and Dr. Ning Lu, to receive the CAPA President's Award this year. Congratulations to Dr. Bian and Dr. Lu!

Dr. Xiu-Wu Bian is a professor and the director of the Institute of Pathology and Southwest Cancer Center, Southwest Hospital, Third Military Medical University. He is the President of Chinese Society of Pathology (CSP) (2013-2016), the vice Chairman of Chinese Association of Pathologists (CAP) (2013-2017) and the President-elect of Tumor Metastasis Research



Committee of Chinese Anti-cancer Association (CACA) (2015-2018). Dr. Bian is the Leading Scientist of "Ten-thousand Talents" Program of China and the "Changjiang Scholar" of Education Ministry of China. His research interest is the interaction of cancer stem cells with tumor microenvironment. His "cancer stem cell research team" is a National Innovation Team. He is the Chief Scientist of National Basic Research Program (973) in cancer stem cells. As corresponding author, he has published 86 peer-reviewed papers in international English journals including *Cell Stem Cell*, *PNAS*, *JNCI*, *Nat Commun*, *Cancer Res*, *Hepatology*, *J Pathol*, etc. He was awarded as the first accomplisher for the first prize of National Science and Technology Progress Award of China, the first prize of Chinese Medical Association Award, and the first prize of Science and Technology Award from CACA. In 2015, he was honored with "Distinguished Pathologist Award" by American Society of Clinical Pathology (ASCP) and Chinese American Pathologists Association (CAPA). As the director, Dr. Bian organized and provided full financial support for the 1st, 2nd and 3rd China-CAPA Pathology Forums in conjunction with the USCAP Annual Meetings in the last three years. These meetings were very well attended by the leading pathologists from China and the pathologists from CAPA. In addition, Dr. Bian has also invited many CAPA speakers to the CSP annual meeting in China in the last three years. Through these platforms, Dr. Bian has made outstanding contributions to CAPA and promoted the communications and collaborations between CAPA and the pathology community in China.

Dr. Ning Lu graduated from the Beijing Medical College (currently Medical College of Beijing University) in 1982.

She is a professor and the chairman of the Department of Pathology National Cancer Center (NCC)/Cancer Hospital, Peking Union Medical College (PUMC), Chinese Academy of Medical Sciences (CAMS), Beijing, China. Dr. Lu is also the deputy director of the Department of Pathology, PUMC, the vice chairman of the Beijing Branch of the Pathology, Chinese Medical Association, the vice chairman of the Tumor Pathology, Chinese Anti-Cancer Association, Trustee of the Beijing Association of Pathologist and members of the Pathological branch of Chinese Medical Association and the Chinese Association of Pathologist.



(Cont'd on Page 9)

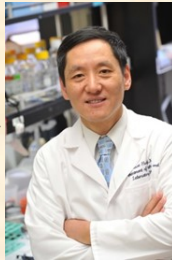
The CAPA Annual Report 2016-2017 (Cont'd)

(Cont'd from Page 8)

Dr. Lu is a well-known pathologist in China specialized in neoplastic pathology and molecular pathology. Dr. Lu successfully organized and served as the directors of the First and Second joint CAPA-Beijing Pathology Summits in Beijing and partially sponsored many CAPA speakers to these meetings in 2015 and 2016. Both meetings included many expert pathologists from China as speakers and provided a unique platform to promote the communications and collaborations between CAPA and the pathology community in China. Dr. Lu is currently planning for the 3rd CAPA-Beijing Pathology Summit with CAPA, which will be held in Beijing in September, 2017.

The CAPA/ACD Distinguished Pathologist Award: Dr. Jiaoti Huang and Dr. Qihui “Jim” Zhai are the recipients of this CAPA award. Congratulations to Dr. Huang and Dr. Zhai!

Dr. Jiaoti Huang is Professor and Chairman of the Department of Pathology at Duke University. He earned his medical degree from Anhui Medical University, Master degree from the Institute of Radiation Medicine in Beijing and his PhD from New York University School of Medicine. Dr. Huang was a Leukemia Society of America Postdoctoral Fellow at NYU and Yale University. He did residency training in pathology at NYU School of Medicine and a fellowship in Oncologic Surgical Pathology at Memorial Sloan-Kettering Cancer Center. He became an assistant professor at the University of Rochester in July 2000 and rose to the rank of full professor in 2007. Dr. Huang moved to UCLA in 2008 and came to Duke at the beginning of 2016. Dr. Huang's clinical expertise is in the pathologic diagnosis of genitourinary tumors. His research focuses on the molecular mechanisms, biomarkers and novel therapies for advanced prostate cancer. Dr. Huang's laboratory is a leader in studying neuroendocrine differentiation of prostate cancer and molecular pathogenesis of prostatic small cell neuroendocrine carcinoma. Dr. Huang has published 200 research papers, review articles and book chapters. He has been continuously supported by grants from NIH, American Cancer Society, Department of Defense, Prostate Cancer Foundation, and Stand Up to Cancer. Dr. Huang served as the member of 2017 CAPA election committee.



Dr. Qihui “Jim” Zhai is a professor of pathology, consultant pathologist and director of FISH Laboratory in Mayo Clinic Florida. He completed his pathology residency at Mayo Clinic Rochester (2002) followed by an oncologic pathology fellowship at MD Anderson Cancer Center (2002-2003). He joined Baylor College of Medicine as assistant professor (2003), then Houston



Methodist Hospital/Cornell University as associate professor (2004-2009), and was recruited to University of Cincinnati as professor (2009). He climbed the academic ladder from assistant to full professor within six short years. Dr. Zhai is a well-sought-after international speaker in head and neck and urological pathology. He is a competent diagnostician and his expertise and interests in translational research contributed significantly to the pathology literature. He published about 100 peer-reviewed original manuscripts, several hundred abstracts, and authored/co-authored seven popular pathology textbooks. He is on the editorial board of several reputable pathology journals and Editor-in-Chief of *International Journal of Clinical and Experimental Pathology*. Dr. Zhai has been actively involved with state and national pathology societies, including USCAP Education Committee, CAP Nomination Committee, Publication Committee, and Surgical Pathology/Immunohistochemistry Committee. He was President Elect of Houston Society of Clinical Pathologists, and currently is Vice President and Chair of the Education Committee of Florida Society of Pathologists. He spent a tremendous amount of time promoting Sino-America pathology education, research and practice. In the year of 2014-2015, he served as CAPA president, and he made outstanding contributions to our own community by setting numerous milestones in CAPA history.

The CAPA/Zu-Hua Gao Outstanding Service Award

Dr. Lizhen Gui is the winner of this traditional award. Dr. Gui is a staff pathologist at Northwest Arkansas Pathology Associates. Dr. Gui initiated the Duotou Microscope WeChat group in 2014. Since then, she has successfully managed the Duotou WeChat group which now has 575 active members and serves as a popular online community the Chinese pathologists in North America. Dr. Gui served as a member of the CAPA Executive Committee and chaired the CAPA Membership Committee for the past two years. In the last three years, she has made major contributions to CAPA in recruiting new members, managing membership database, being in charge of the registrations of our annual meetings, the 1st and 2nd CAPA pathology courses, organizing CAPA annual dinners and the dinners during both pathology courses, etc. We thank Dr. Gui for her outstanding dedications to CAPA! Congratulations to Dr. Gui!



The CAPA Member of the Year Award: This award was created in 2015 to recognize the CAPA members who have gone above and beyond to help CAPA achieve its ambitious goals. Without their passion, talent, effort, and dedication to this community, these challenging goals would have not been accomplished.

(Cont'd on Page 10)

The CAPA Annual Report 2016-2017 (Cont'd)

(Cont'd from Page 9)

This year, this award goes to (in alphabetical order): Drs. Fan Chen, Zongming Chen, Jie Song, Xiaoping Sun, He Wang, Lanjing Zhang and Bihong Zhao. Congratulations to the winners!



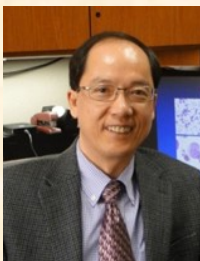
Dr. Fan Chen, Chair of CAPA Publication and Website Committee. She is in charge of CAPA eNewsletters and the brochures of CAPA annual meetings. She also involved in the maintenance of CAPA website in the last two years.



Dr. Zongming Chen, CAPA Treasurer. He is in charge of all CAPA financial activities, including membership and registration payments, in the past two years. He has played a critical role in the planning of all CAPA activities since 2015.



Dr. Jie Song, Chair of the CAPA Publication and Website Committee, He is in charge of maintaining and updating CAPA website in the last two years. He has created a new CAPA website in 2016 and is the IT expert who did an outstanding job in supporting 2017 CAPA election.



Dr. Xiaoping Sun devoted his time and effort taking photos and making videos for CAPA. He initiated soliciting financial support for CAPA Houston/Galveston Chapter six years ago, which has led to the Chapter's regular and popular annual gathering since then. He also obtained financial support for the 2nd CAPA Pathology Course in Houston and 15th Annual

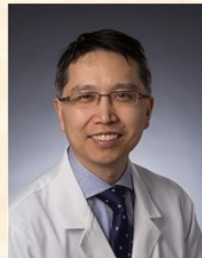
CAPA Meeting.



Dr. He Wang was one of the organizing committee and faculty members who were in charge of CME for the 2nd CAPA pathology courses in Houston.



Dr. Bihong Zhao was one of the organizing committee members who were in charge of the Karaoke party for the 2nd CAPA pathology courses in Houston. She is one of leaders who are planning for the CAPA annual dinner and Karoke party this year.



Dr. Lanjing Zhang, CAPA Executive Member and Chair of Education Committee, He is one of the leaders who organized the First CAPA companion meeting in conjunction of CAP'2016 and the 2nd China- US Pathology Symposium. He has also played an important role in many other CAPA activities.

CAPA-GoPath Best Abstract Award

FIRST PLACE

Kevin Yi Mi Ren, MD, Queen's University at Kingston, Ontario, Canada, Analysis of Ezrin and Phospho-ezrin (Active) as Biomarkers of Invasion and Metastasis in Breast Cancer

SECOND PLACE

Yimin Dong, MD, PhD, University of Arizona, Brushing Cytology with Adjunctive FISH and Biomarker Analyses Is Highly Sensitive and Specific in the Early Detection of Low-grade Dysplasia in Barrett's Esophagus

Yanchun Li, MD, PhD, Roswell Park Cancer Institute, PDL-1 (Clone 22C) Stromal Expression Predicts Better Overall Survival in HER2+ Breast Carcinoma

THIRD PLACE

Jian He, MD, PhD, University of Texas MD Anderson Cancer Center, Novel Herceptin-Based IHC Test Detects HER2+ Breast Cancers Correlating to Responses to HER2-Targeted Therapy

Tong Sun, MD, PhD, University of Massachusetts, A Comparative Study on the Diagnostic Value of Next Generation Sequencing in Urine Cytology and Bladder Tumor Specimens

Wei Zhang, MD, PhD, Mount Sinai Health System, APC and KRAS Genetic Variants Associated with Colorectal Cancer Histology Grade and Tumor Staging

(Cont'd on Page 11)

The CAPA Annual Report 2016-2017 (Cont'd)

(Cont'd from Page 10)

CAPA-Motic Best Abstracts Award

FIRST PLACE PRIZE

Shuang-Mei Zou et al. Peking Union Medical College, Cancer Hospital, Chinese Academy of Medical Sciences, Beijing, The Extensive Heterogeneity between Primary and Metastatic Colorectal Carcinoma Detected by Next Generation Sequencing

SECOND PLACE PRIZE

Jing Li, et al. Department of Pathology, KingMed Diagnostics, Guangzhou, Experience and Analysis of 2087 Frozen Section Diagnoses Using Digital Telepathology

Wenhao Ren et al. Department of Pathology and Resident Training Base, Cancer Hospital, Peking Union Medical College and Chinese Academy of Medical Sciences, Beijing, Value of Cytopathologic Diagnosis in Endobronchial Ultrasound-Guided Transbronchial Needle Aspiration and Endoscopic Ultrasound-guided Fine Needle Aspiration

THIRD PLACE PRIZE

Mingyang Li, et al. Department of Pathology, Xijing Hospital, Fourth Military, Anaplastic Variant of Diffuse Large B-cell Lymphoma Displays Intricate Genetic Alterations and Distinct Biological Features

Lan Chen et al. Department of Pathology, Beijing Hospital, National Center of Gerontology, Beijing, Cytopathological Diagnosis of Hematolymphoid Neoplasms in Serosal Effusion: An Algorithmic Approach Combining Morphology, Immunophenotyping and Genomics

Yu Shi et al. Institute of Pathology and Southwest Cancer Centre, Southwest Hospital, the Third Military Medical

University, Chongqing, Tumor-Associated Macrophages Secrete Pleiotrophin to Promote PTPRZ1 Signaling in Glioma Stem Cells and Support Tumor Growth

Special thanks to the CAPA Award Committee, led by Dr. Hanlin Wang and Dr. Guoping Cai; the CAPA-GoPath best abstract review panel: Dr. Ruoqing Huang, Dr. Haiyan Liu, Dr. Yan Peng, Dr. Hua Yang, Dr. Xinmin Zhang, and Dr. Chengquan Zhao; the CAPA-Motic best abstract review panel: Dr. Marilyn Bui, Dr. Wenqing Cao, Dr. Beiyun Chen, Dr. Xiaohua Qian, Dr. Lanjing Zhang, and Dr. Chen Zhou; and CAPA EC members for their dedications and efforts to make the selection for the above 2017 CAPA award winners.

In summary, CAPA is well-prepared and positioned for future growth. We are CAPA and we are connected. Together, we are making CAPA a stronger and better organization.

It has been my immense privilege and great honor to have served as the CAPA President 2016-2017! My professional life has been greatly enriched, inspired, and influenced by the many friends and colleagues I have met along the way especially those with whom I have had close interactions during the past year. I want to thank the CAPA Executive Committee, subcommittees, all the dedicated members and volunteers who worked closely with me to accomplish these ambitious goals. Again, I want to thank all sponsors for their very generous support of CAPA. We are very fortunate to have Dr. Ping Tang leading our organization for the next term. Dr. Tang and the entire CAPA leadership team will take the CAPA to the next level.

Huamin Wang, M.D., Ph.D.
On Behalf of the CAPA EC
CAPA President, 2016-2017
Professor, University of Texas M.D. Anderson Cancer

Third China-US Pathology Symposium: The Next Generation of Pathology

Co-organized by Chinese Society of Pathology (CSP) and Chinese American Pathologists Association (CAPA)

Sponsored by Chinese Association of Medicine

8:30 am to 1:30 pm, Saturday, March 4, 2017
RC salon E (3rd FL), Marriott Rivercenter, San Antonio, TX, USA

Program chairs: Drs. Xiu-Wu Bian and Huamin Wang

Executive chairs: Drs. Xiang Du and Lanjing Zhang

Advisors: Drs. Jie Chen and Jinsong Liu

8:00 - 8:30 Registration (No registration fee)

8:30 - 8:35 Introduction and Welcome by Drs. Dr. Xiu-Wu Bian (Southwestern Hospital, Third Military Medical University) and Huamin Wang (University of Texas MD Anderson Cancer Center)

(Cont'd on Page 12)

Third China-US Pathology Symposium (Cont'd)

(Cont'd from Page 10)

Hot Topics Session I

- Moderators: Dr. Xiang Du (Fudan University Cancer Center)
Dr. Ping Tang (University of Rochester Medical Center)
- 8:35 - 9:00 Cardiac stem cells may lead to cardiac repair post myocardial infarction
Dr. Guoping Wang (Tongji Medical College, HUST)
- 9:00 - 9:25 Testicular neoplasms: cases-based presentation and review of immunohistochemistry.
Dr. Fan Lin (Geisinger Medical Center)
- 9:25 - 9:50 Current status and progress of the basic and clinical research of colorectal cancer in China. Dr. Li Liang (Southern Medical University)
- 9:50 - 10:15 IHC working algorithms for ENT pathology: a case-based approach.
Dr. Beverly Wang (UC Irvine)
- 10:15 - 10:30 Break

Hot Topics Session II

- Moderators Dr. Guoping Wang (Tongji Medical College, HUST)
Dr. Lanjing Zhang (Princeton HealthCare System/Rutgers University)
- 10:30 - 10:55 Current status and problems of the pathology quality-control in China.
Dr. Jie Chen (Peking Union Medical College)
- 10:55 - 11:20 Managing an academic department of pathology: How do young faculty prepare for it? Dr. Jiaoti Huang (Duke University Medical Center)
- 11:20 - 11:45 Precision pathology guides next generation of pathology. Dr. Xiu-Wu Bian
(Southwestern Hospital, Third Military Medical University)
- 11:45 - 12:10 Molecular / genomic alterations in lymphoma / leukemia -Brief review and practice applications. Dr. Huan-You Wang (UC San Diego)
- 12:10 - 12:30 Break

Case Discussions (12:30- 13:30)

- Moderators: Dr. Jie Chen (Peking Union Medical College)
Dr. Yun Gong (University of Texas MD Anderson Cancer Center)

Case #1: Peking Union Medical College, Chinese Academy of Medical Sciences

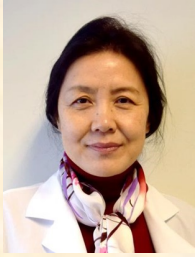
Case #2: Tongji Medical College, Huazhong University of Science & Technology

Case #3: Shanghai Cancer Center, Fudan University

Case #4: West China Hospital, Sichuan University

Case #5: Southwestern Hospital, Third Military Medical University

CAPA 2017 Officers for Subcommittees



President 2017-2018 (Ping Tang)

Zenggang Pan, Limin Yu

1 Educational Content Subcommittee:

Chairs: Ximing Yang, Hanlin Wang

Co-chair: Yan Peng

2. Conference Logistics subcommittee

Chair: Lanjing Zhang

Co-Chairs: He Wang, Bihong Zhao

Members: Zhengtong Pei, Shuyue Ren, Zhiyong Ren, Dongfeng Tan, Xinmin Zhang and Yaxia Zhang

3. Online Education Subcommittee

Chair: Linsheng Zhang

Co-Chairs: Zenggang Pan, Limin Yu

Members: Baojin Fu, Xiangtian (Max) Kong, Deyin Xing, Dehua Wang, Xiaoxian (Bill) Li, Zhiyong Ren, Chen Zhang, Hong Xiao, Zaibo Li, Yaxia Zhang, Jianying Zeng

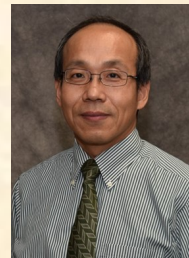


Past President (Huamin Wang) (Left)



President-elect (Yun Gong) (Right)

EC Members



2015-2018 (Marilyn Bui, Guoping Cai, Huan-You Wang)



2017-2019 (Lirong Cheng, Andy Ke, Wei Xin, Linsheng Zhang)

Treasurers (Eric Chen 2015-2018; Huihong Xu (2018-2021)

Secretary to president (Haiyan Chen 2018)

Education Committee

Chair: Wei Xin

Co-chair: Shuyuan Xiao

Members: Chunhua Cui, Yaxia Zhang, Bihong Zhao, Shunyou Gong

Default members (chairs and co-chairs of the subcommittee): Ximing Yang, Hanlin Wang, Yan Peng, Lanjing Zhang, He Wang, Bihong Zhao, Linsheng Zhang,

Membership Committee

Chair: Guoping Cai

Co-chairs: Chunhua Cui, Qing Ding, Xiuli Liu, Qinghu Ren

Members: Zhihong Hu, Fang Qian, Kevin Ren, Wei Zhang, Lee-Ching Zhu, Rong Xia

Award Committee

Chair: Marilyn Bui

Co-chairs: Xinmin Zhang, Chengquan Zhao, Charles Guo, Hua Yang, Wendy Cao, Xu Yang, Yaxia Zhang, Rohn Fann, Zaibo Li

Members: Jinming Song, Hailing Zhang, Xiaohui Zhang

Newsletter Committee

Chair: Huan-You Wang

Co-chair: Fan Chen

Members: Yanxia Li, Guilan Chen, Hui Guan,

Website Committee

Chair: Andy Ke

Co-chairs: Jie Song, Yanxia Li, Guilan Chen

Member: Fayu Chen

Public Relation Committee

Chair: Lirong Cheng

Co-Chairs: John Gao, Paisha Yan, Feng Li

Members: Huihong Xu, Zhiwei Ma, Xin Jing

(Cont'd on Page 14)

CAPA 2017 Officers for Subcommittees (Cont'd)

(Cont'd from Page 13)

Career Development Committee

Chair: Linsheng Zhang

Academics

Chair: Jiaoti Huang

Co-chair: Fang Fan

Private Committee

Chair: Andy Ke

Co-Chair: Song Qing Zhao

Residents, Fellows, and Prospective Pathology Residents

Chair: Wei Xin

Co-chair: Xiaohua Qian

Senior Consultant Committee

Chairs: Huamin Wang, Chin-Lee Wu

Members: Ximing Yang, Bin Yang, Shu-Yuan Xiao, Shuan Li, Ming Zhou, Steven Shen, Zu-Hua Gao, Jinsong Liu, Qihui (Jim) Zhai, and Fan Lin

CAPA Activities for 2017-2018

- 1) Bali, Indonesia, April 24-27, 2017, CAPA at APIAP
- 2) Chicago, August 19-20, 2017, CAPA Pathology Course
- 3) Beijing, September 2-3, 2017, CAPA-Beijing Pathology Symposium
- 5) National Harbor, October 7-11, 2017, CAPA Companion Meeting at CAP
- 6) Dali, October 21-22, 2017, CAPA Pathology Symposium in China
- 7) Suzhou, October 26-29, 2017, CAPA Companion Meeting at CSP.
- 8) Vancouver, March 2018, CAPA Annual Meeting at USCAP
- 9) Weekly online course Saturday 7-9pm (Please check email and WeChat for announcements)

Questions and Suggestions

ping_tang@urmc.rochester.edu

Wechat ID: ptang6661

Recent Achievements from CAPA Members

1. **Chen HH**, Kilic AI, Picken M, Pambuccian SE, Wojcik EM. Amyloid in endobronchial ultrasound-guided transbronchial needle aspiration cytology. *Diagn Cytopathol*. 2017 Feb 20. [Epub ahead of print]
2. Chen Z, Chen S, Wang W, Zuo Z, Mou X, Hu SJ, DiGiuseppe JA, Zu Y, Medeiros LJ, **Hu S**. Cytogenetic landscape and impact in blast phase of chronic myeloid leukemia in the era of tyrosine kinase inhibitor therapy. *Leukemia*. 2017 Mar;31(3):585-592.
3. Chen Z, Medeiros LJ, Kantarjian HM, Zheng L, Gong Z, Patel KP, Xiong H, Wang W, Cortes JE, **Hu S**. Differential requirement of depth of response for optimal outcome in blast phase versus chronic phase of chronic myeloid leukemia in the era of tyrosine kinase inhibitor therapy. *Blood Cancer J*. 2017 Feb 3;7(2):e521.
4. Hu Z, Medeiros LJ, Chen Z, Chen W, Li S, Konoplev SN, Lu X, Lan V Pham, Young KH, Wang W, **Hu S**. Mantle cell lymphoma with MYC rearrangements: A report of 17 patients. *Am J Surg Pathol*. 2017 Feb;41(2):216-224.
5. Hu Z, Medeiros LJ, Wang W, Chen Z, Tang G, Hodjat P, Yang S, Fang L, Li Y, Verstovsek S, **Hu S**. 3q26.2/EV11 rearrangement is associated with poor prognosis in classical Philadelphia chromosome-negative myeloproliferative neoplasms. *Mod Pathol*. 2017 Mar 24.
6. Gong Z, Zheng L, Tang Z, Chen Z, Wang W, Bai S, Tang G, Medeiros LJ, **Hu S**. Role of complexity of variant Philadelphia chromosome in chronic myeloid leukemia in the era of tyrosine kinase inhibitor therapy. *Ann Hematol*. 2017 Mar;96(3):501-504.
7. Gong Z, Xie W, Wang W, Chen Z, Xue J, Yuan J, Zhou Y, Wang D, Medeiros LJ, **Hu S**. T-lymphoblast phase of chronic myelogenous leukemia in the era of tyrosine kinase inhibitor therapy. *Int J Lab Hematol*. 2017 Apr;39(2):e45-e50.
8. Bai S, **Hu S**. BCR-ABL1-negative acute myeloid leukemia relapsing as BCR-ABL1-positive disease. *Br J Hematol*. 2017 Feb;176(4):514.
9. Oo, TH, **Hu S**. Copper deficiency related bone marrow changes secondary to long-term total parenteral nutrition. *Clin Case Rep*. 2017 Feb;5(2):195-196.
10. Pan Z, **Hu S**, Li M, Zhou Y, Kim YS, Reddy V, Sanmann JN, Smith LM, Chen M, Gao Z, **Wang HY**, Yuan J. ALK-positive large B-cell lymphoma: a clinicopathologic study of 26 cases with review of additional 108 cases in the literature. *Am J Surg Pathol*. 2017 Jan;41(1):25-38.

(Cont'd on Page 14)

Recent Achievements from CAPA Members (Cont'd)

(Cont'd from Page 7)

11. Agbay RL, Torres-Cabala CA, Patel KP, Merrill ED, Duvic M, Quesada A, Prieto VG, Aung PP, Loghavi S, Young KH, **Hu S**, Ferrufino-Schmidt MC, Tetzlaff M, Li S, Medeiros LJ, Miranda RN. Immunophenotypic shifts in primary cutaneous $\gamma\delta$ T-cell lymphoma suggest antigenic modulation: a study of sequential biopsy specimens. *Am J Surg Pathol*. 2017 Apr;41(4):431-445.
12. Hu Z, Medeiros LJ, Fang L, Sun Y, Tang Z, Tang G, Sun T, Quesada AE, **Hu S**, Wang SA, Lin P, Lu X. Prognostic significance of cytogenetic abnormalities in T-cell prolymphocytic leukemia. *Am J Hematol*. 2017 Feb 14.
13. Salem A, Loghavi S, Tang G, Huh YO, Jabbour EJ, Kantarjian H, Wang W, **Hu S**, Luthra R, Medeiros LJ, Khoury J. Myeloid neoplasms with concurrent BCR-ABL1 and CFBF rearrangements: a series of 10 cases of a clinically aggressive neoplasm. *Am J Hematol* 2017 Mar 2. doi: 10.1002/ajh.24710. [Epub ahead of print].
14. Huang L, Wang SA, DiNardo C, Li S, **Hu S**, Xu J, Zhou W, Goswami M, Medeiros LJ, Tang G. Tetraploidy/near-tetraploidy acute myeloid leukemia. *Leuk Res*. 2017 Feb;53:20-27.
15. Gur HD, Wang SA, Tang Z, **Hu S**, Li S, Medeiros LJ, Tang G. Clinical significance of isolated del(7p) in myeloid neoplasms. *Leuk Res*. 2017 Apr;55:18-22.
16. Thakral B, Medeiros LJ, Desai P, Lin P, Yin CC, Tang G, Khoury JD, **Hu S**, Xu J, Loghavi S, Hu B, Oki Y, Li S. Prognostic impact of CD5 expression in diffuse large B-cell lymphoma in patients treated with Rituximab-EPOCH. *Eur J Hematol*. 2017 Apr;98(4):415-421.
17. Jain P, Milgrom SA, Patel KP, Nastoupil L, Fayad L, Wang M, Pinnix CC, Dabaja BS, Smith GL, Yu J, **Hu S**, Bueso-Ramos CE, Kanagal-Shmanna R, Medeiros LJ, Oki Y, Fowler N. Characteristics, treatments, and outcomes of patients with follicular dendritic cell sarcoma: the MD Anderson Cancer Center experience. *Br J Hematol* (in press).
18. **Wang Huan-You**, Thorson JA. A CD34-negative MYC-rearranged B-lymphoblastic lymphoma aberrantly expresses CD3 and CD5. *Blood*. 2017 Mar 9;129(10):1403.
19. Browne SH, Diaz-Perez JA, Preziosi M, King CC, Jones GA, Jain S, Sun X, Reid EG, VandenBerg S, **Wang Huan-You**. mTOR activity in AIDS-related diffuse large B-cell lymphoma. *PLoS One*. 2017 Feb 13;12(2): e0170771.

THE HEALING ART of Pathology



Marilyn M. Bui
Katherine A. Galagan



At a Glance

- *Many patients are still unaware of what a pathologist is, much less the vital role they play in patient care*
- *Inspired by an artist and sarcoma patient, a book of art by pathologists and patients, hopes to bring the two groups together*
- *“The Healing Art of Pathology” features paintings, sculptures, drawings, essays and more by people on both sides of the microscope*
- *The editors hope the collection will contribute to pathology awareness, and give patients and pathologists some common ground for communication*

This book is the collective voice of pathologists showing the world our passion, dedication, talent and contribution to patient care, science and education. Purchasing this book is to support CAP Press and CAP Foundation. Both editors donate their royalties of the book to CAP Foundation which has a signature program “See, Test and Treat Program” which provides underprivileged women with free breast cancer and cervical cancer diagnosis and treatment.

This book can be used in the following ways to advocate pathologists for a better patient care:

- Purchase the book from CAP and donate it to the hospital breakrooms, waiting rooms, and patient art program.
- Talk about the book to your colleagues, families and friends.
- Post the information provided here in your social media.

Case of Quarter (COQ) for CAPA eNewsletter

Submitted by HY Wang, UC San Diego

Clinical History:

The patient is a 71 years old female with a history of para-protein due to lymphoplasmacytic lymphoma. She is now presented with generalized infiltrative orange-yellow papules coalescing into annular plaques. This biopsy was taken from epigastric region.

H&E and relevant immunohistochemistry:

As shown in Figure 1, there is a diffuse dermal infiltrate dissecting the collagen. On higher magnification (Figure 2), these atypical cells are medium-sized to large cells with irregular nuclear contours.

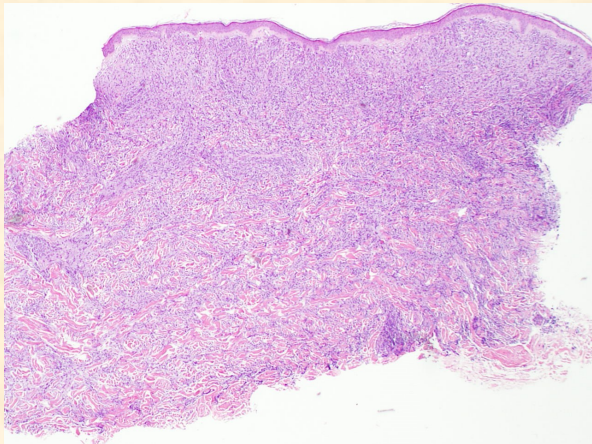


Figure 1. H&E (Original magnification X20)

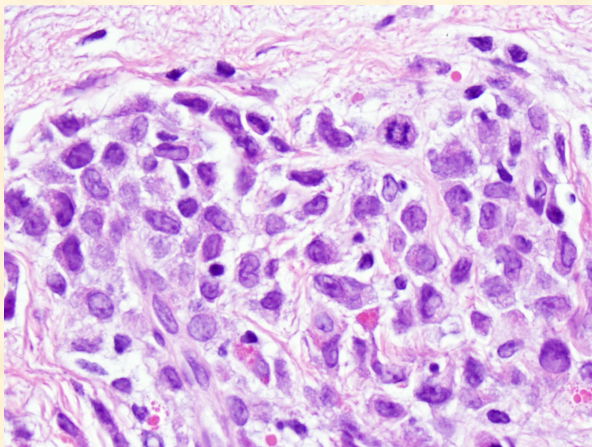


Figure 2. H&E (Original magnification X400)

A panel of immunohistochemistry (IHC) was performed. These atypical cells are positive for CD56 (Fig 3) and CD4 (Fig 4).

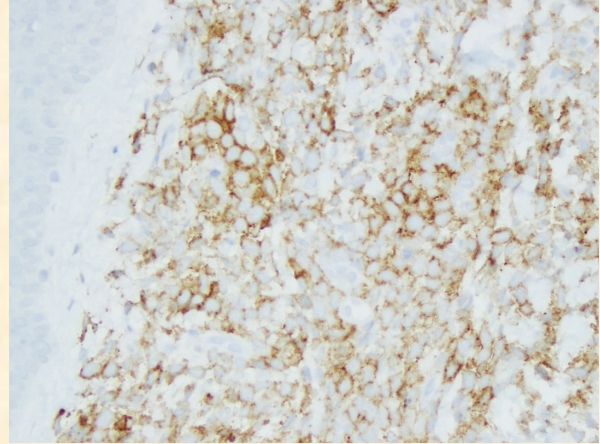


Figure 3. Immunohistochemical Stain CD56 (Original magnification X200)

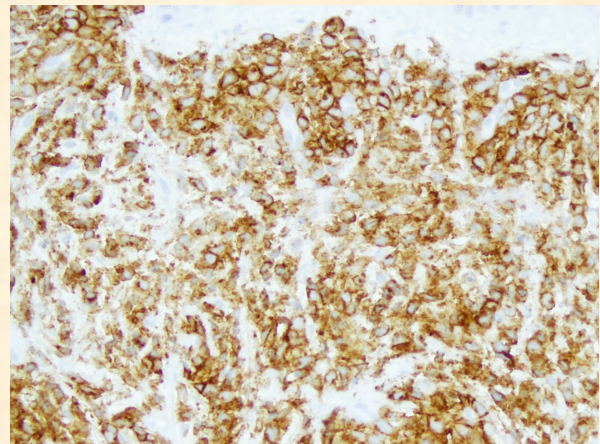


Figure 4. Immunohistochemical Stain CD4 (Original magnification X200)

What is your differential diagnosis and further work-up?

To be continued in the next issue.

Recipes of Quarter (ROQ) for CAPA eNewsletter

Submitted by Guilan Chen

老式鸡蛋糕，小时候的味道

配方：

large eggs, 3个

Cake flour, 70g

Granulated sugar, 50g

白醋, 1 teaspoon

Vegetable oil, 1 tablespoon

做法：

1. 3个鸡蛋加 1 teaspoon 白醋加50g白糖，用电动打蛋器，42摄氏度水浴打发至浓稠，体积整大至2-3倍，如图1



2. 筛入70g cake flour, mix using spatula 图2



3. Mix in 1 tablespoon of vegetable oil
4. 注入烤盘，340华氏度烤12分钟，图3



CAPA Acknowledges the Following Sponsors for Their Support

Advanced Cell Diagnostics, Inc.

BioGenex

Fidelity

Foundation Medicine

Geisinger IHC Reference Lab

Gopath

Maixin

Motic

NovoDias, Inc.

South East Pathology Association

WebPathLab Inc.

CAPA Acknowledges the Following Sponsors for Their Support

**No antibody.
No problem.**

Breakthrough multiplex RNA *in situ* hybridization for any gene with RNAscope® technology.

Because up to 76% of protein-coding genes have no reliable antibody for immunohistochemistry (IHC), your research often comes to a screeching halt while you wait for a new antibody to be developed. With rapid probe design and universal assay workflows for any gene, RNAscope® technology frees you from the hassles of antibody screening, saving you precious time and effort, while driving publication quality data.

Learn more about RNAscope® Technology at www.acdbio.com



PD-L1 detection in lung cancer cells using RNAscope® 2.0 HD Reagent kit v2.0



A&D
Advanced Cell Diagnostics

For Research Use Only. Not for diagnostic use. RNAscope is a registered trademark of Advanced Cell Diagnostics, Inc. in the United States or other countries. All rights reserved. ©2013 Advanced Cell Diagnostics, Inc.

Rare for you but not for Foundation Medicine

RARE/UNCOMMON SUBTYPE	PERTINENT TUMOR DRIVER	FDA APPROVED TARGETED THERAPIES	FDA APPROVED THERAPIES IN ANOTHER TUMOR TYPE
Non-Serous Ovarian Cancer, e.g. Ovarian Clear cell	BRCA1/2	Olaparib	Trastuzumab, Peramipab, Pazopanib, Temozolamide, Everolimus, Olaparib and others
	ERBB2		
	FRR1/2/3		
	AKT1/2		
Pancreaticobiliary Cancers: Cholangiocarcinoma Pancreas Cysticobiliary	CDH1/2	Palbocicli	Azastridine, Docetaxine, Trastuzumab, Tyrosinimab, AZD5363, Pazopanib, Dabrafenib, Trametinib, Venetoclax, Everolimus, Trastuzumab, Pembicizumab, Trastuzumab, Pembicizumab, Trametinib, Trastuzumab, Pembicizumab
	ERBB2		
	FGFR2		
	BRAF		
	PTEN		
	SMC4/2		
	ERBB3		
	BRAF		
Uncommon subtypes of breast cancer	CDKN1	Palbocicli	Olaparib, Abiraterol, Celecoxib, Erlotinib, Lapatinib, Peramipab, Trastuzumab, Everolimus, Temozolamide
	BRCA1/2		
	ESRR		
	ERBB2		
	PKC3/6, NF1, STK11, ARID1A, PTEN		
	ARID1A, PTEN		
Salivary Gland	ERBB2	Palbocicli	Trastuzumab, Peramipab, Celecoxib, Lapatinib, Temozolamide, Everolimus, Olaparib, Trametinib, Dabrafenib
	ESRR		
	PTEN		
	BRCA1/2		
	BRAF		
	BRCA1/2		

Comprehensive genomic profiling using FoundationOne has been performed on > 16,000 uncommon tumor cases. Learn more at: USCAP Annual Meeting Booth #541

FOUNDATION MEDICINE®

MXB
Biochemistry

Maixin provides comprehensive range of solutions for immunohistochemistry



Biotechnologies
福州迈新生物技术开发有限公司
Tel: +86-886-8531-9200-6881-156

10 MINUTE DIRECT IHC

Available Products:

- ihcDirect AE3/AE3
- ihcDirect Mart-1
- ihcDirect CK8/18
- ihcDirect Synaptophysin
- ihcDirect Herceptin

Time In Minute	Procedure
0-5	Fixation
0-1	Wash in PBS
0	No Blocking
0-5	PolyHRP-Antibody
1	Wash in Water
1	DAB
0-1	Wash in Water
2-3	Counter Staining + Dehydration + Coverslipping
9-10	Total Time

NOVODIAX

VISIT: www.novodiox.com
CALL: 1.888.439.2716
EMAIL: novoinfo@novodiox.com

Digital Scanner and Telepathology Platform
Automated Cervical Cancer Screening
Cancer DNA Ploidy Analysis
Cytology and Surgical Pathology Services



南京赛迪医疗诊断系统有限公司
MOIC NANJING MEDICAL DIAGNOSTIC SYSTEMS CO., LTD.

厦门赛迪医学检验所
XIAMEN MEDICAL LABORATORY

数字病理远程会诊平台
www.chicpathology.cn

切片扫描
通知会诊
出具报告
上传平台

Motic Medical Diagnostic Systems, Xiamen, China
med.motic.com

SEPA Labs
SOUTHEASTERN PATHOLOGY ASSOCIATES



SOUTHEASTERN PATHOLOGY ASSOCIATES